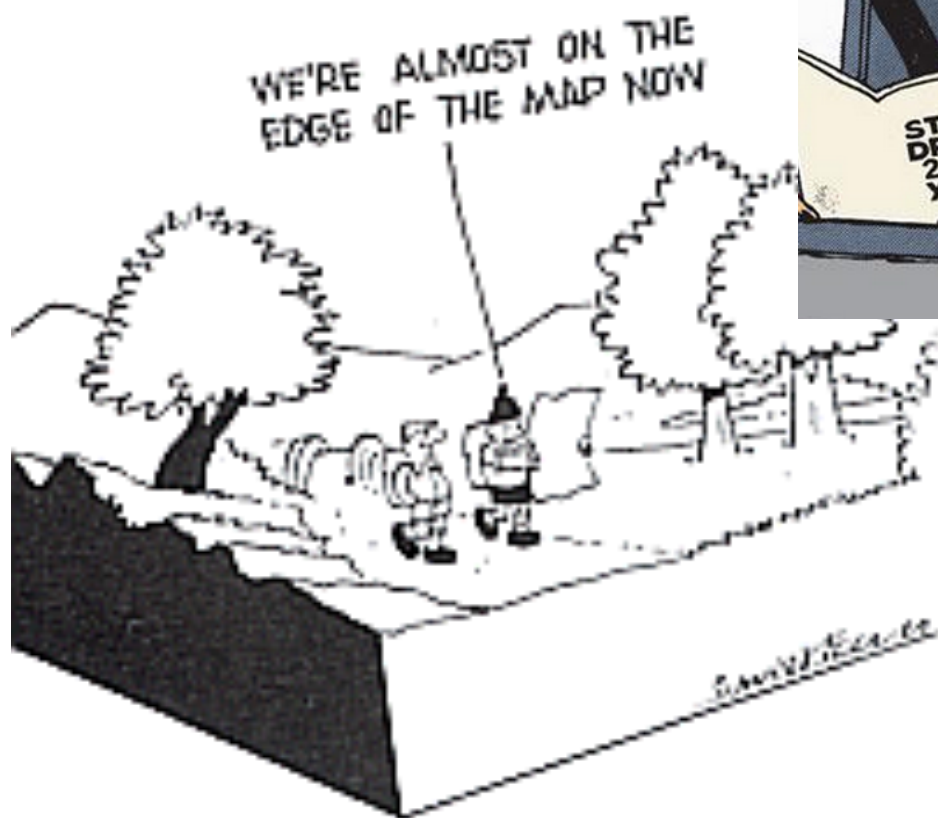


A satellite image of Earth from space, showing the Americas. North America is in the upper half, and Central America and the northern part of South America are in the lower half. The oceans are a deep blue, and the landmasses show green vegetation and brown/tan terrain. The text "Maps Geocaching & GPS" is overlaid in the center in a white serif font.

Maps Geocaching & GPS

Google Earth



MAPS



Cartography (from Greek *chartis* = map and *graphein* = write) is the study and practice of making maps. Combining science, aesthetics, and technique, cartography builds on the premise that reality can be modeled in ways that communicate spatial information effectively. ~ Wikipedia

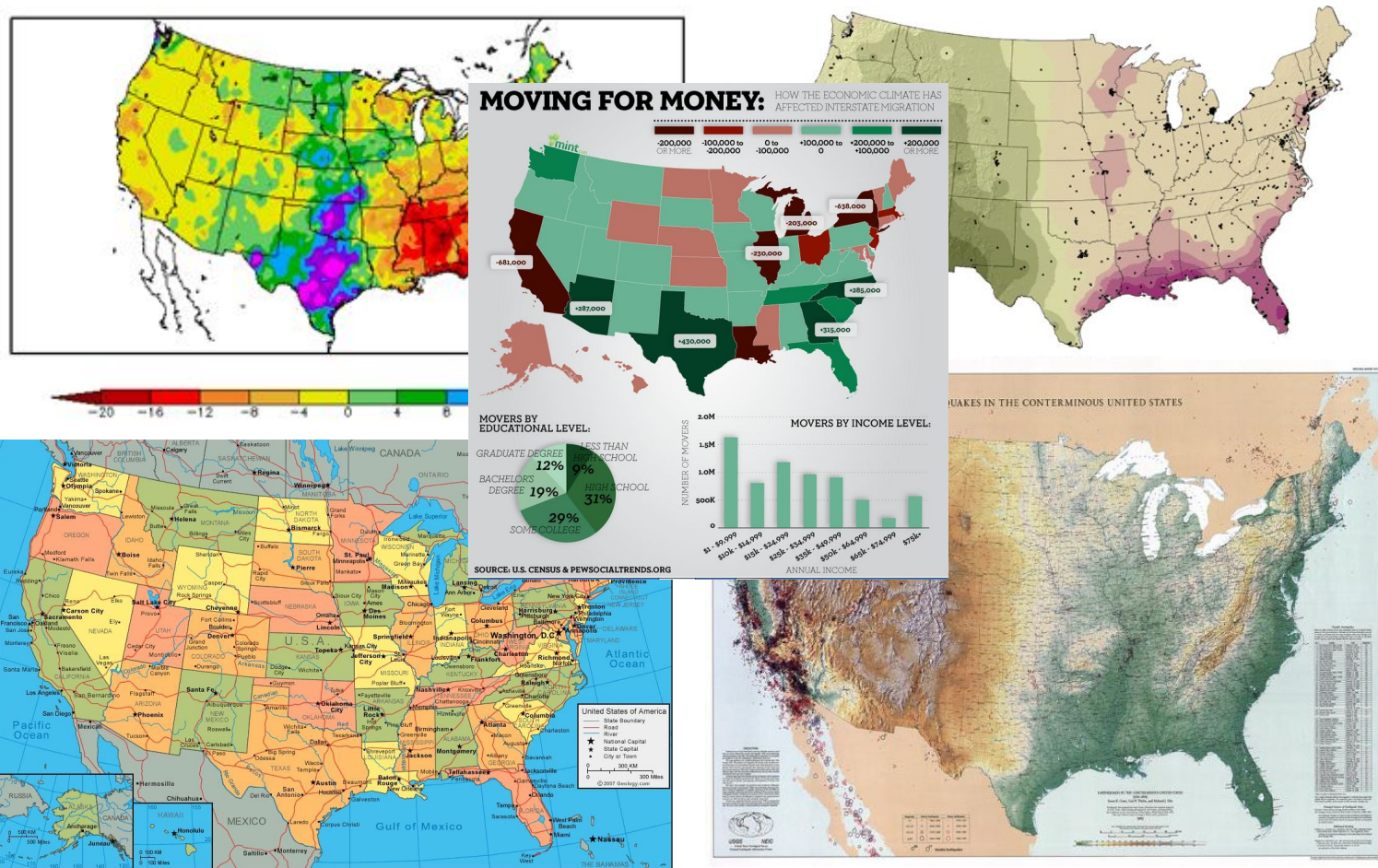
A history of map making... <http://en.wikipedia.org/wiki/Map>

The future of paper maps... <http://tinyurl.com/4xm6onj>

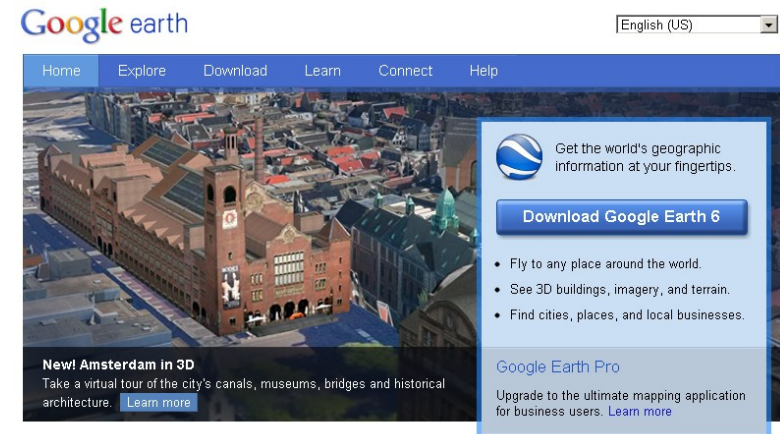
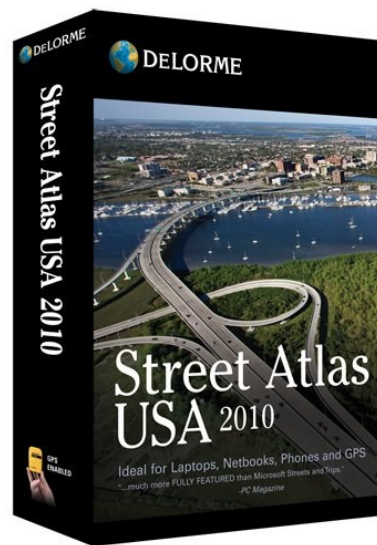
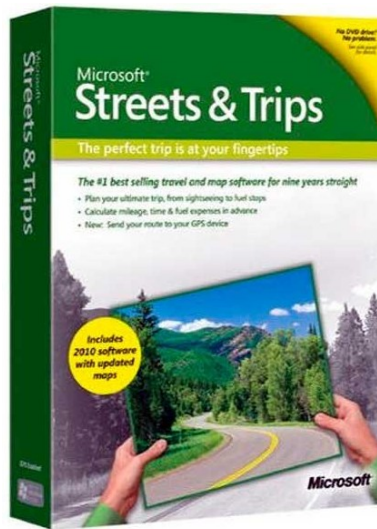
Geographic Information Systems... <http://tinyurl.com/45ykjzv>

Types of Maps

There are basically 5 types of maps. They are climate maps, economic or resource maps, environmental maps, political maps, topographic maps.

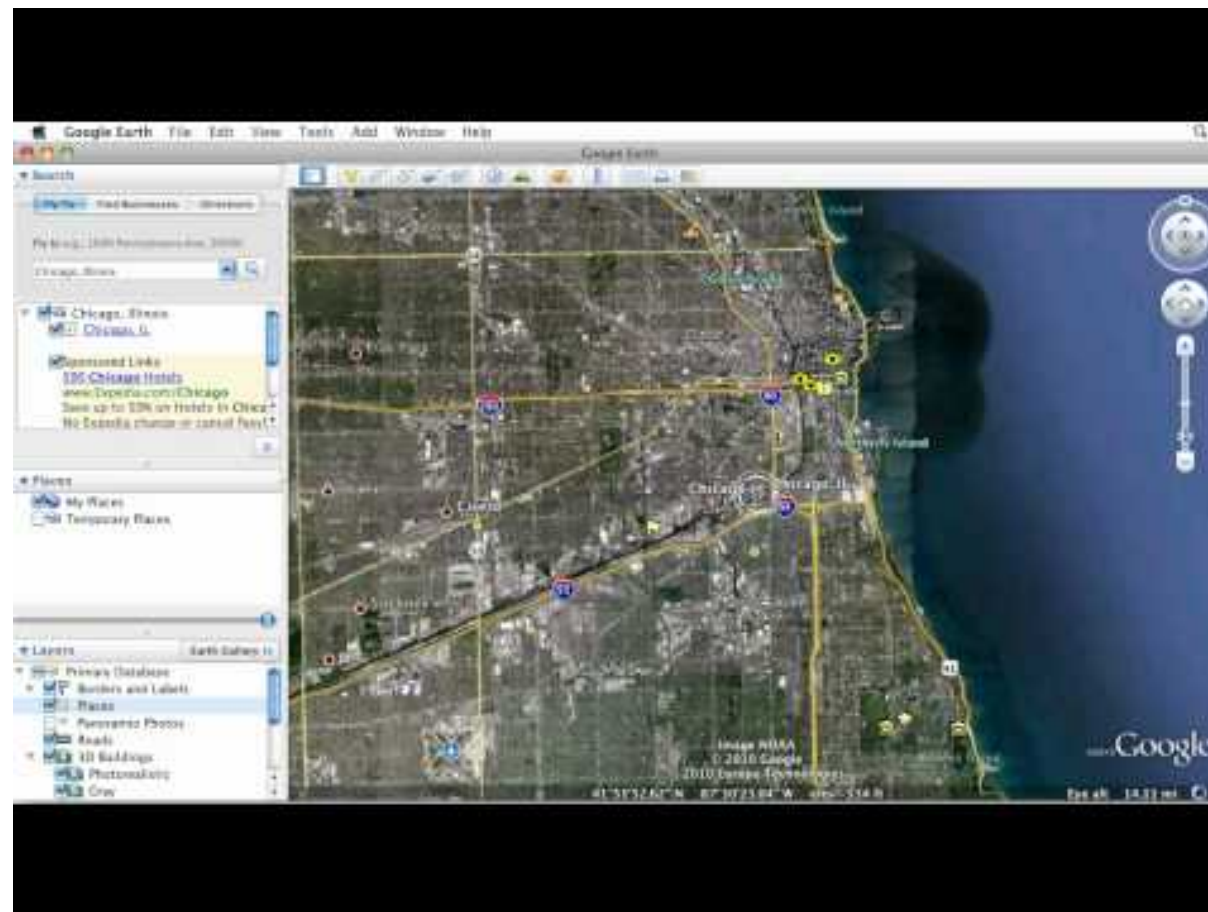


Map Software



Online Maps



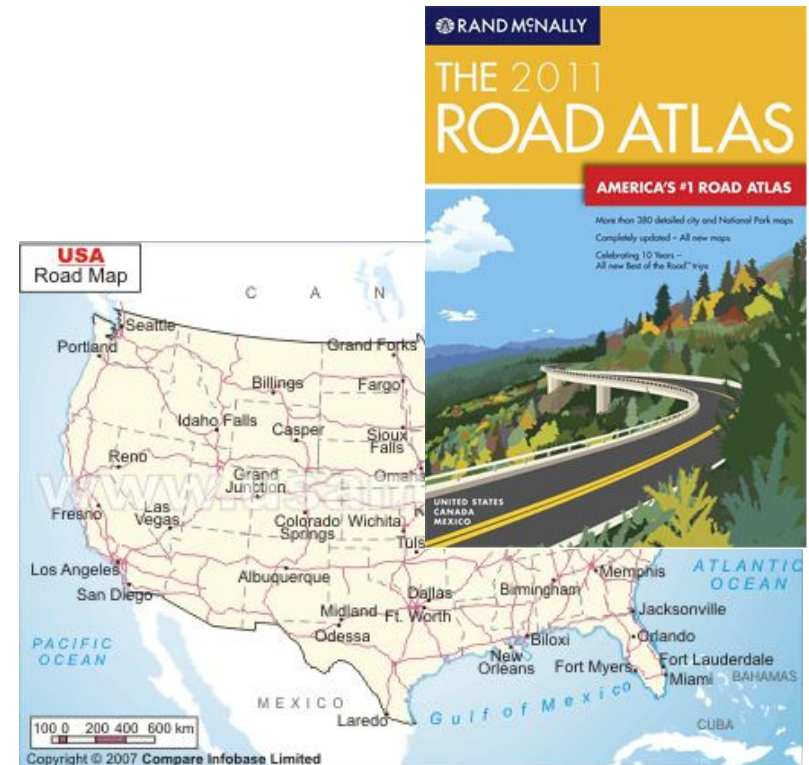




Now you can submit information to Google Maps.
<http://mapmaker.google.com>

GPS

GPS has changed the way we navigate. On June 26, 1993, the [U.S. Air Force](#) launched the [24th Navstar satellite](#) into orbit, completing a network of 24 satellites known as the Global Positioning System, or GPS. Selective Availability (SA) was lifted May 1, 2000. Bringing highly accurate global positioning to the general public. Electronic GPS based navigation devices are replacing the Road Map and Atlas for driving navigation.





Types of GPS

Automobile Portable, Automobile Pocket, Automobile In Dash, Fish Finder, Camping and Hiking, Fitness and Cycling, Motorcycle, Marine, and Aviation.

Some GPS Makers

Garmin - <http://www.garmin.com>

Magellan - <http://www.magellangps.com/>

TomTom - <http://www.tomtom.com/>

Navigon - <http://www.navigon.com>

Google Navigation - <http://www.google.com/mobile/navigation/>

Geocaching

On May 3, 2000, Dave Ulmer [proposed](#) a way to celebrate the demise of SA. He hid a bucket of trinkets in the woods outside Portland, Oregon and announced its location in a [posting](#) made to a USENET newsgroup. Within a day, the original stash had been found. Within days, more stashes had been hidden in California, Kansas, and Illinois. Within a month, a stash had been hidden as far away as Australia. On May 8, Mike Teague [announced](#) a Web site for collecting the locations of caches. On May 30, a new name was coined for the hobby. Matt Stum suggested "[geocaching](#)" to avoid the negative connotations of the word "stash". On September 2, 2000, Jeremy Irish [emailed](#) the gpsstash mailing list that he had registered the domain name geocaching.com and had setup his own Web site. He copied the caches from Mike Teague's database into his own. On September 6, Mike Teague [announced](#) that Jeremy Irish was taking over cache listings.



The home of Geocaching is <http://www.geocaching.com/>



A geocache close to the library.

Additional Hints ([Decrypt](#))

Evtug erne.

Right rear.



Memorial Hall Redux

A cache by [James Bridger](#) Hidden : 06/08/2009

Difficulty: ★★☆☆☆


Size:  (Micro)

Terrain: ★★☆☆☆



N 38° 50.586 W 097° 36.795 [Other Conversions](#)

UTM: 14S E 620348 N 4300279

 S 20.2mi from your home location

In Kansas, United States [View Map](#)

Print:

 [No Logs](#) [5 Logs](#) [10 Logs](#)  [Driving Directions](#)

Download: [Read about waypoint downloads](#)

[LOC waypoint file](#) | [GPX file](#) | [Send to My GPS](#) | [Send to My Phone](#)

Please note: Use of geocaching.com services is subject to the terms and conditions [in our disclaimer](#).

There used to be a cache here, but it was mugged and the listing archived. It seems a travesty to not have one in the area, so I replaced it. You will not have to leave the ground to find this cache, and please do not trample the landscaping. This is a publicly accessible area and there is parking nearby. You will be looking for a green Altoid tin.

Respect the area, CITO if needed, practice stealth, and rehide as you find it for the next cacher. Thank you and good luck.

LINKS

Topo maps - <http://www.digital-topo-maps.com/>

Geocaching - <http://www.geocaching.com/>

Garmin - <http://www.garmin.com>

Magellan - <http://www.magellangps.com/>

TomTom - <http://www.tomtom.com/>

Navigon - <http://www.navigon.com>

Google Navigation - <http://www.google.com/mobile/navigation/>

Google Map Maker - <http://mapmaker.google.com>

National Geographic Maps - <http://www.natgeomaps.com/>

USGS Map Store - <http://store.usgs.gov> Download free topo maps.

